



TB36NTR/TB36NTRE Direct Vent Gas Fireplaces

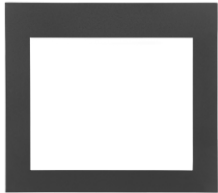


TB36NTR/TB36NTRE Direct Vent Gas Fireplaces

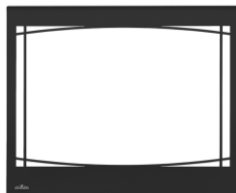
KEY SERIES FEATURES

- UP TO 18,000 BTU'S
- Pan Style Burner
- Millivolt or Electronic ignition systems available
- Back-up control system ensures reliable use, even during power failures
- Clean face design with no louvers
- Optional Porcelain Reflective Radiant Panels
- Optional blower kit
- Optional media enhancement kits
- Flue Size: 4"/7"
- Approved for Ventis, Duravent, Amerivent, Direct Temp and SuperSeal direct vent systems

The TB36 is perfect for builders and homeowners who are looking for versatile installation options. When space is at a premium, the TB36 is ideal for corner applications while presenting the largest viewing area of its class. With an improved log set and burner, The Timberwolf TB36 is sure to provide the most charming atmosphere for any room. You can enhance the look of the TB36 from a variety of face fronts, media kits, and trim kits.



Clean Face Front



Zen Front



2" or 3" Trim Kits



Beach Fire Kit



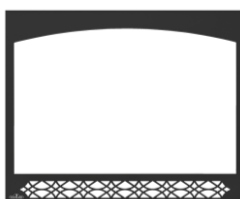
Mineral Rock
Kit



Shore Fire Kit



Wrought Iron Front



Heritage Front



Porcelain Reflective
Panel (Optional)



Blower (Optional)



Optional Digital
On/Off Remote or with
Thermostat



TB36NTR/TB36NTRE Direct Vent Gas Fireplaces

The Timberwolf Gas Fireplaces add ambiance to any room. They are perfect for builders and homeowners alike. The shallow depth allows for versatile installations where space is at a premium. The clean face design maximizes the viewing area so the realistic flames and hand painted log set are enjoyed to their fullest. A multitude of designer options allow this fireplace to enhance your space perfectly. These are great replacement units for old and outdated fireplaces.

TB36NTR/TB36NTRE Direct Vent Gas Fireplaces

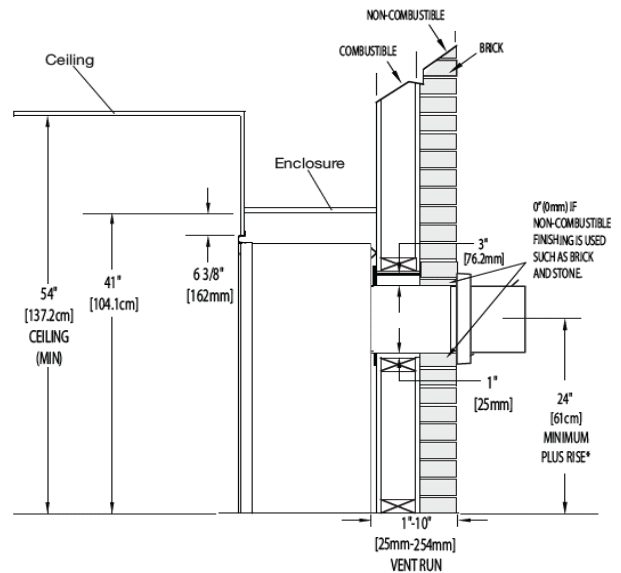
FEATURES

FUEL TYPE	Natural Gas
BLOWER	Optional
GAS VALVE TYPE	Millivolt or Electronic
LP COVERSION KIT	Yes
GLASS / VIEWING HEIGHT (IN)	23 11/16"
GLASS / VIEWING WIDTH (IN)	30 11/16"
TOTAL MAX (BTU) NG	18,000
WARRANTY	President Limited
FLUE SIZE	Lifetime
GLASS TYPE	Tempered

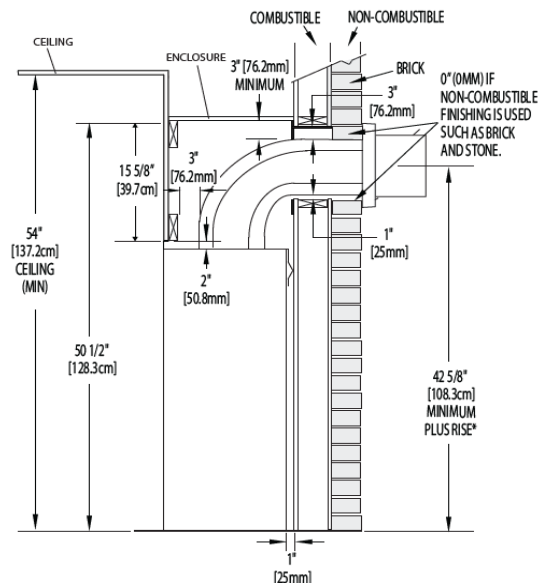
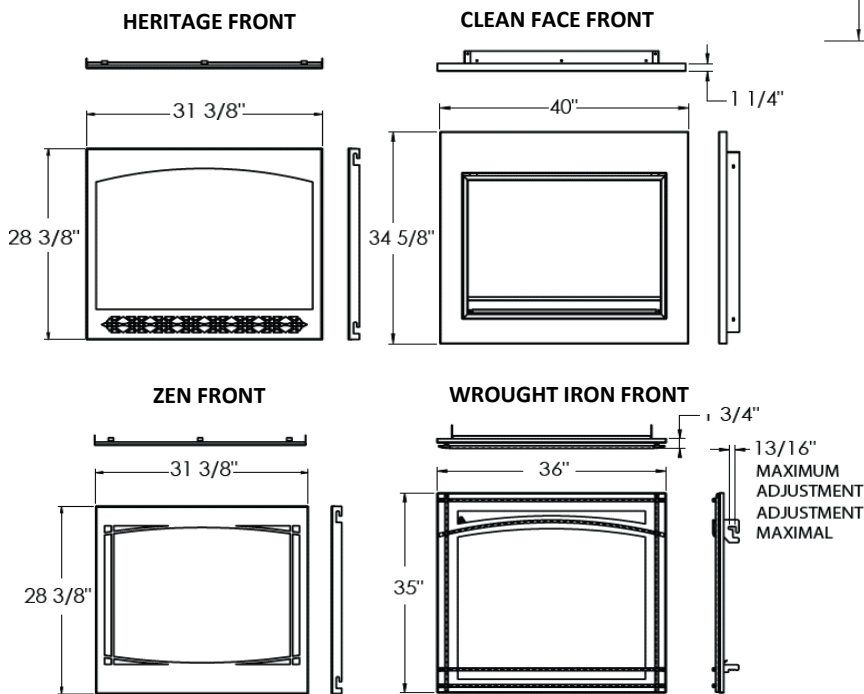
EXTERIOR DIMENSIONS AND WEIGHT

WIDTH	35"
DEPTH	15 3/4"
HEIGHT	34 5/8"
WEIGHT	100. lb.

Typical Venting



Front Options



Unit Dimensions

