



**PREMIUM
FOREVER FLEX™**

CHIMNEY LINER

A new generation of liner is here! Premium Forever Flex, an extremely flexible, easy to uncoil liner that has superior strength while also being very lightweight. Because of its low-memory and incredible flexibility, it is very easy to install. The liner and its top-notch components make for a high-quality & reasonably priced lining system that installers love.

A NEW GENERATION OF LINER

Manufactured from certified 0.005" thick 316Ti
Stainless Steel with Titanium.

Features a 7-ply Seam, Which is Air and Water-Tight

Available as Pre-Insulated Which Increases Performance by
Producing a Better Draft and Reducing Condensation

Ideal for Chimneys with Offsets

Use with Standard Forever Flex™ Components



FOREVER FLEX™ KITS SHIP FOR FREE



PREMIUM FOREVER FLEX™ CHIMNEY LINER

PREMIUM KITS AND COMPONENTS



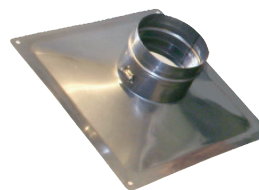
316Ti Tee Kits



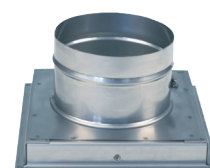
316Ti Appliance
Connector Kits



304L Kits



Top Plates



Terra Cotta Top Plates



Quick Cap with Screen
and Wind Guard



Quick Cap without
Screen



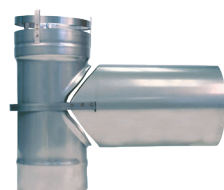
Quick Cap with Screen
and No Wind Guard



Light Flex Oil Cap



Free-Flow Reducer/
Inceaser



Tees with Removable
Take Off



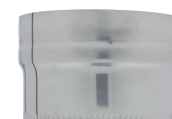
Pellet Tee



Tee Caps



Fixed and Adjustable
Elbows



Forever Flex Snout
Adapter



Manufactured by

LYMPIA
CHIMNEY & VENTING

The information contained herein is correct at the time of publication; we reserve the right to alter specifications without prior notice.



FOREVER FLEX™ KITS SHIP FOR FREE

