



CHIMNEY LINER

The HYBRID Smoothwall Chimney Liner has the Perfect Combination of Weight, Ruggedness & Flexibility! The HYBRID is stronger than standard liners without the weight of heavyflex liners. The inside will not cup, feather or tear like standard smoothwall liners. The HYBRID has no memory and is more flexible than any other liner. It can also be ovalized and coiled for easy handling and cost effective shipping.

'LIGHT' YEARS AHEAD OF THE COMPETITION

Manufactured from Certified 0.010" thick 316L Stainless Steel

Features a Smooth Interior for Less Turbulence

Available as Pre-Insulated Which Increases Performance by Producing a Better Draft and Reducing Condensation

Availability of Quality, Matching Components That Ship Same Day!

3"-8" in Stock — Any Length

Forever Warranty™ — The Famous Warranty That Covers All Solid Fuels as Well as Gas and Oil



ASK ABOUT OUR FOREVER WARRANTY™



HYBRID CHIMNEY LINER COMPONENTS

HYBRID COMPONENTS THE PERFECT MATCH



Tee Kits



Appliance Kits



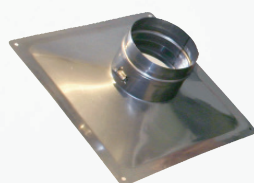
Quick Cap with Screen



Quick Cap without Screen



Quick Cap with Screen and No Wind Guard



No Sag/No Leak Top Plates



Terra Cotta Top Plates



Tees with Removable Take Off



Caps



Tees with 22" Take Offs



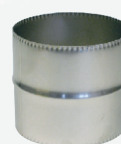
15° and 30° Fixed Elbows



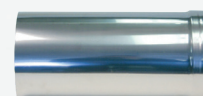
45° and 90° Adjustable Elbows



Dripless Connector



Liner Coupling



Slip Connector



Manufactured by

LYMPIA
CHIMNEY & VENTING

The information contained herein is correct at the time of publication; we reserve the right to alter specifications without prior notice.



ASK ABOUT OUR FOREVER WARRANTY™

