

SUPERIOR PROTECTION AND FIT

# CHASE COVERS

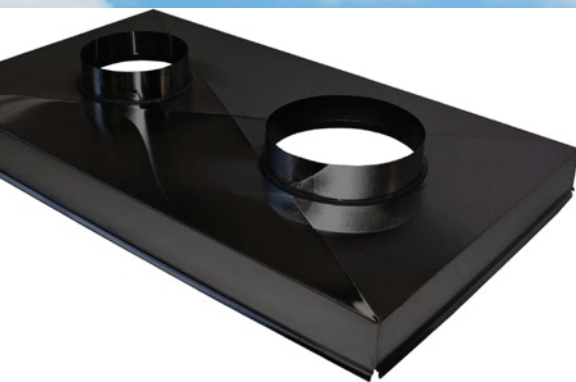
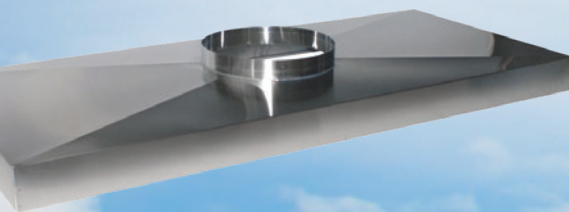
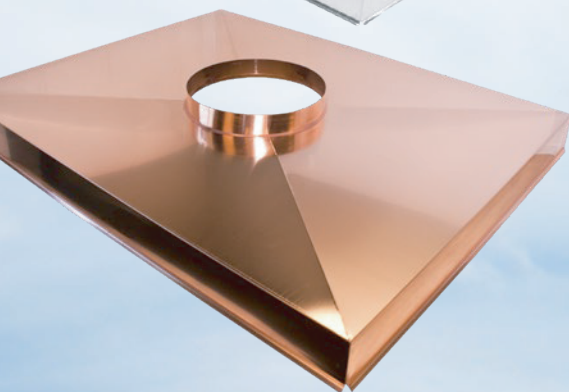


NOW AVAILABLE THROUGH  
**COPPERFIELD!**

800-256-1926  
[copperfield.com](http://copperfield.com)

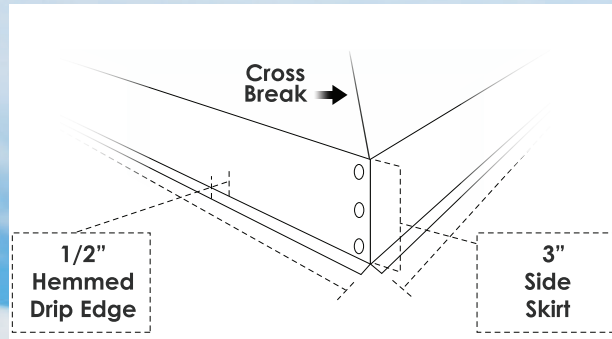


**OLYMPIA**  
CHIMNEY & VENTING



## STAINLESS OR COPPER CHASE COVERS

A chimney chase cover seals off the top of the chimney or chase in order to prevent moisture from seeping in. They are typically designed to fit around a round metal chimney and are shaped like the lid of a shoe box. Chase Covers are made of either 24 ga. stainless steel or 20 oz. copper. Chase Covers can be ordered with or without holes.



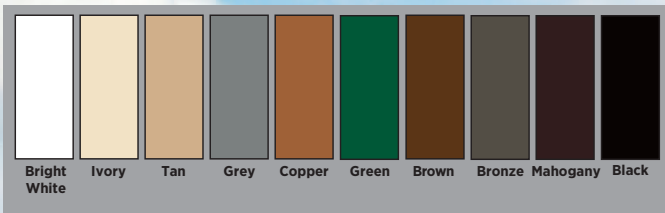
### Features:

- Full-Length Crossbreaks
- Spot Welded Corners
- Forever Warranty
- Hemmed Drip Edge

### Options:

- Extra Collar Height
- Extra Skirt Length

## POWDER COATING AVAILABLE





STAINLESS OR COPPER  
BIG DRIPPER  
CHASE COVERS



Our Big Dripper Chase Covers take water intrusion prevention to the next level. The Big Dripper Chase Cover carries all of the features of our Standard Chase Covers and adds Advanced Drip Edge Technology to extend well beyond the sides of the chimney. Keeping water away from absorbent masonry units is a major part of a well planned water intrusion prevention program.

**Features:**

- Advanced Drip Edge Technology
- Full-Length Cross-breaks
- Spot Welded Corners

- Forever Warranty

**Options:**

- Extra Collar Height
- Extra Skirt Length



**ADJUSTABLE STORM COLLARS (aluminum)**

Adjustable to 4 different diameters ranging from 5" to 16" collars. These collars will NOT fit 1/2 sizes.

# Olympia Chimney & Venting making America's homes safer with high-quality chimney and venting solutions since 1999.



**NOW AVAILABLE THROUGH  
COPPERFIELD!**

**800-256-1926  
copperfield.com**

The information contained herein is correct at the time of publication; we reserve the right to alter specifications without prior notice.



Founded in 1999, Olympia Chimney and Venting is a leading manufacturer of chimney venting systems, liners and accessories. Headquartered in Scranton, Pennsylvania, OCV is deeply committed to manufacturing quality product with innovative design and engineering.

In January 2019, Olympia acquired Copperfield Chimney Supply. Copperfield was founded in 1978 by industry icon “Sooty” Bob Daniels, and quickly grew to become a leading national distributor serving contractors and retailers in the service of hearth and chimney services.

Olympia’s acquisition of Copperfield in 2019 brought together two of the biggest names in the chimney and venting industry. With the unifying passion for innovation and driving the customer experience, the combination of the two companies made for a stronger single entity within the industry. All divisions of the organization are committed to advocating, educating and promoting fire safety.

DEALER INFO